

WWMC Newsletter Number 32, January 2024

Message from Tim Clarke, CEO of WWMC

As we open our first newsletter of 2024, I wish you and your families a very happy new year. Following on from the success of plant facility tests in December, our teams have been carrying out commissioning tests in block 2. These tests are witnessed by representatives from DM and the project lenders, to give assurance that the key plant functions are operating as per design. Following the completion of these commissioning tests the plant will be shut down, to allow a thorough inspection of boilers, in preparation for the start of EOP2 due to start early in Q2. The commissioning tests completed so far have been successful and we look forward to getting through these important milestones early in February.



A Dubai Municipality tanker moves into position to collect flue gas residues from the silos at the rear of block 2



Plan Testing Update

The plant commissioning and facility testing regime has been all consuming during the last two months, as our teams put the plant through its paces in preparation for COD in July. On the 27th December we carried out the Interim Waste Throughput test, where we operated all 5 boilers, while receiving the maximum daily waste capacity of 5,600 tons. DM was able to meet this peak delivery demand with no traffic congestion. The increased collection by DM of FGT residues and IBA aggregates were also carried out seamlessly. This gives the whole project community great confidence as we move forward in the commissioning testing schedule. Our O+M contractor Shoualah is now mobilising the remaining staff needed for full plant operations, and the client and owner's engineer teams have moved into the administration building on site this month. This will allow the EPC contractor to begin clearing the remaining site offices ready for final landscaping works and perimeter fence erection. Our teams are

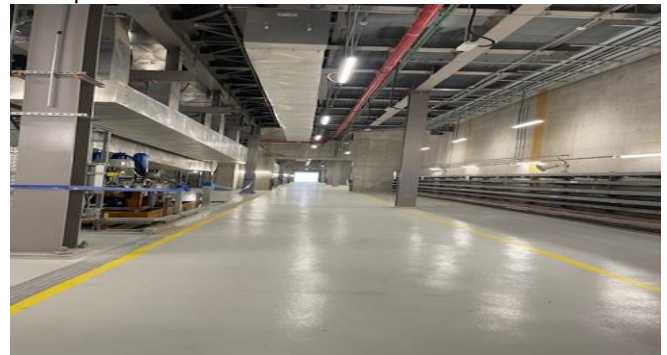
working with environmental consultants to install and test the remaining air quality and noise monitoring stations, and the EPC contractor has completed a site noise survey during January. This study assessed noise inside and outside the plant area, to ensure that noise from plant activities remains within the threshold limits for both the workforce and our neighbors.

An acoustic specialist conducting noise surveys inside the plant, and adjacent to our nearest sensitive receptors at Desert Palms Resort



Preparing for full plant operations

With plant construction works fully completed, our EPC contractor has removed the internal segregations between blocks 1 and 2 this month. The Early Operations phase for block 1 (EOP1) has been underway since the 22nd August 2023, and the commissioning tests for block 2 are nearing completion as we close the month. We then move into a period of outage, where the plant will be fully shut down for inspection and maintenance, followed by a resumption of operations involving all systems in blocks 1 and 2. This second early operations phase (EOP2) will include a final performance testing sequence, to ensure that all plant systems can sustain maximum operating capacity for specified time periods.



All EOP1 barricades are now removed from the boiler hall

For more information about the WWMC project, to request information or to raise a grievance please email us at info@wwmc.ae.