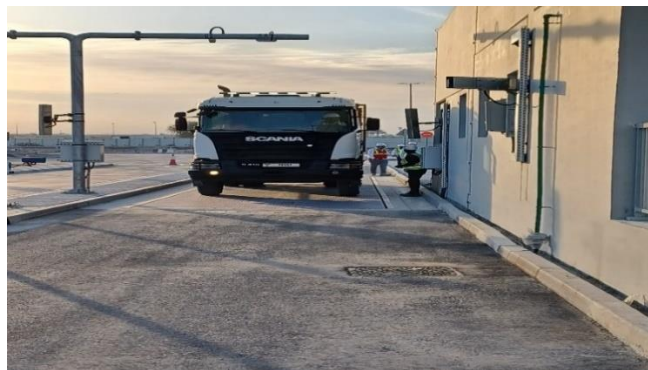


### Message from Tim Clarke, CEO of DWMC

Welcome to our April newsletter. On the 17<sup>th</sup> of this month we received the first waste delivery to site, marking a major step forward in preparing the plant for the first waste fire which is scheduled in early May. This major milestone has been achieved because of the dedication, commitment and cooperation between DWMC, DM Waste Operations Department, EPC, their subcontractors and O+M Co. Our EPC contractor now sends DM a daily operational request, where projected waste quantities required are specified, allowing DM to plan their operations teams to deliver waste to the DWMC facility. The first waste deliveries will allow commissioning of the waste bunker cranes and volumes of waste will be progressively increased as the hot commissioning program intensifies and we start to burn waste.



The first waste delivery truck arrives at the DWMC site at 6.00 am on Monday the 17<sup>th</sup> April.

### Project Progress

Tower crane 14 was removed from site this month, as high level construction work in block 2 is nearing completion, and cold commissioning works are now under way here. Cable pulling, glanding and termination for site power supplies is now completed in the main control tower, and elsewhere around the site final electrical connections and testing are progressing in the fixed sub-stations. The installation of roof and wall purlins in block 2 boiler hall is moving forward and roof supports are installed over the entire main IBA storage area, which is now being cleared of the remaining construction materials. The internal cleaning of the air cooled condensers will begin early in May, and specialist contractors have been setting up their equipment and finalising documentation in preparation. Cable tray covering in the IBA pre-maturation area is almost completed, as are the finishing works for the wall and roof cladding here. On the turbine hall roof the lightning protection

system installation is underway, and MEP snagging in the technical block is nearing completion.



The remaining construction works in the boiler hall are at the western end of block 2

### Focus Spot-Metals recovery and recycling

The DWE plant is receiving municipal solid waste (MSW) from domestic and commercial locations across the Emirate of Dubai. A proportion of this waste includes metals, both ferrous and non ferrous, from discarded products. The IBA sorting area is fitted with equipment to separate out and harvest these metals from the ash stream, using magnetic and electronic devices, plus manual hand picking stations. Metals recovered are stored in skips and DWMC is developing business arrangements for the resale and recycling of these products, which will include the reforming and re-use of metallic goods within the Emirate of Dubai.



A waste compactor vehicle maneuvers on the tipping floor in preparation for waste discharge into bunker 1.

### Stakeholder engagement-Open House event

During April DWMC management met with local residents from the Desert Palm Resort to explain the plant commissioning process, and to give an overview of how the plant will operate after commissioning. Following a technical presentation there was a Q+A session; further open house sessions are planned for Q3 & Q4 this year and DWMC will be hosting an information booth in Dragon Mart entrance in June, to provide further public information. To request information or to raise a grievance please email us at [info@dwmc.ae](mailto:info@dwmc.ae) or visit [www.DWMC.ae](http://www.DWMC.ae)