

Message from Tim Clarke, CEO of DWMC

Welcome to our final newsletter of 2022. We have achieved a number of significant milestones this year, including the pressure testing of boilers 11, 12 and 23, connection to site of the 11kv power supply and the start of commissioning, the recycled water and potable water supplies into the water treatment plant, the energisation of our MV network, and the notable achievement of 8.5 million safe hours worked without lost time injury, achieved in September.



Members of the Owner and EPC teams with the 8.5 million safe hours commemorative award and certificate. From L2R Guissepe, Tim, Giacomo, Jim and Mehmet

We were pleased to welcome His Excellency Saeed Al Tayer the Commissioner for Infrastructure in Dubai and His Excellency Dawoud Al Hajri the Dubai Municipality Director General to site this month. Following a project update the guests conducted a site tour including a visit to the main control room. As we close 2022 I wish to thank all members of the DWE project team for their ongoing support this year, and in particular for our continued focus on workplace safety. I would also like to take this opportunity to wish you and your families a Happy Christmas season and a peaceful and prosperous New Year.

Project Progress

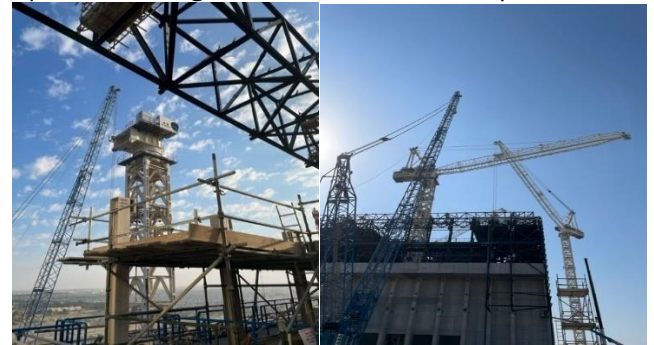
While work in the process area continues at pace, our EPC contractor has also been preparing the road network at site. When Early Operations starts in the first half of 2023, the plant must be able to handle up to 400 trucks per day. A new access gate is being developed for waste delivery trucks, and site roads are being compacted ready for top surface finish. Training for truck drivers who will be bringing vehicles to the DWE site will start in January 2023. There are important procedures that must be

followed by site users, and all drivers and vehicles must be approved prior to entry.



New site access gate being prepared for waste delivery trucks

The second of our four Yong Mau heavy lift cranes is being removed from site this month, as work to close the roof over waste bunker 2 will begin shortly. The remaining 2 Yong Mau cranes will continue to operate serving the rear sections of the process area.



TC 13 being dismantled from its location in waste bunker 2.

Focus Spot The Main Control Room

Situated at the centre of the plant between waste bunkers 1 and 2 at the 23 metre level is the Main Control Room. This is the nerve centre for the plant and during December specialist vendors have been installing and testing the hardware and software packages. During operations shift leaders and panel operators will monitor and control plant functions from the information on display screen equipment in the MCR. As the DWE plant comprises fully and semi-automated functions, communications between field and panel operators is essential.

HSE Update

December saw our 18th monthly safety award ceremony. Since the start of these events 1,174 individual safety awards have been given out to staff from all sections of the project workforce. This level of engagement is a clear demonstration of the effectiveness of these events, and a testimony to the commitment of our management team and the workforce at large towards safety.

For more information about the DWMC project, to request information or to raise a grievance please email us at info@dwmc.ae.