

Message from Tim Clarke, CEO of DWMC

Welcome to our October newsletter. After final completions in the medium voltage (MV) transformer suite, I am delighted to report that we are now connected to our 6.6 KV commissioning power supply at site. This milestone will allow our commissioning teams to progressively energise plant equipment, as systems are completed and handed over. Our connection to the irrigation water supply from the sewage treatment plant at Al Aweer has also been completed this month. Known as TSE, this supply is purified at the water plant, before being pumped into the process system. This feed provides the primary source of water used in the water-steam cycle, which drives the turbine generator. Our EPC Contractor can now complete commissioning works in the water treatment plant.



Project Progress

The remaining wind walls in the air cooled condenser block (ACC) are being fitted, so too the final sections of steam-cycle and condensate ducting, which connect the ACC to the turbine package. Mechanical erection in the ash handling and storage areas is progressing well, with roof and wall cladding sections in place. With mains power now connected to site, the commissioning teams are preparing for the energisation and commissioning of the air compressors, needed for instrumentation and control systems across the site.

Roof structures and process equipment erection in the IBA pre-maturation area



Wall cladding installation above the waste bunker façade on the front elevation is progressing well, while the boiler house roof is steadily being closed from the crash deck over block 1. The first waste grab assemblies are being prepared for connection to the bunker cranes. In operation they will first mix the waste products in the bunker, to ensure a consistent blend of fuel, then pick up and deposit waste from the bunker into the feed hoppers, that transfers the waste to the combustion chambers via the ram feeders. Four waste cranes will transfer over 5,000

tons of waste a day from the two waste bunkers into the five combustion chambers that power our boilers.

While our EPC Contractor is focused on completing works ready for early operations in block 1, construction works in block 2 are proceeding well with boiler membranes, super heater and economiser assemblies for boilers 3, 4 and 5 at advanced stages of erection

Main site images L from the west-R from the east

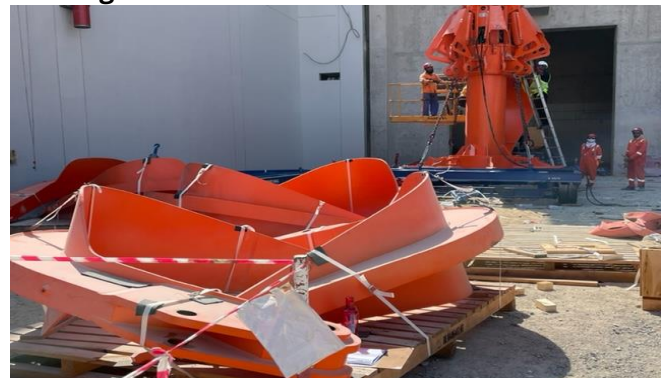


As construction is progressing, materials in the lay-down areas around the site periphery are reducing. This has made space for our EPC contractor to begin ground works for the construction of the main plant road networks around the site boundaries. Over 1,000 vehicles a day will pass through the site when the plant is in full operations. The installation of fire systems is continuing, and we expect to have water available in the network of fire mains and hydrants during November.

Health and Safety

Our EPC Contractor continues to hold monthly safety awards, where project workers at all levels are rewarded for their efforts in demonstrating good performance. October's event included special awards given to members of the housekeeping team. This team was created to ensure that refuse from construction works is systematically removed from all areas at site. This ensures that access and egress gangways are always kept available for our workforce, and flammable refuse is removed from areas where hot works are taking place.

Waste grab assemblies under construction



For more information about the DWMC project, to request information or to raise a grievance please email us at info@dwmc.ae.