

## Message from Tim Clarke, CEO of DWMC

Welcome to our tenth monthly newsletter. While the main focus of works is the completion of block 1, our EPC Contractor has also installed the ram feeder and combustion grate for boiler 3 in block 2 this month. We now have four super-sized cranes at site and major lifts of structural steels and process equipment are taking place every day. Two of the tallest structures at site have also been installed during March; the 70 meter exhaust stacks for lines 1 and 2.

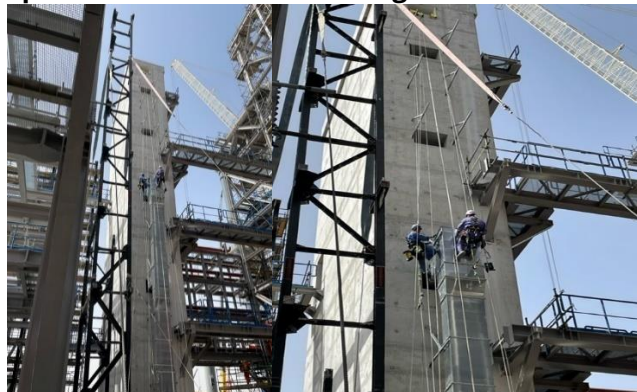


As we approach the hot season our EPC contractor is making plans to implement the heat stress management campaign that will help keep our workforce safe during the summer months.

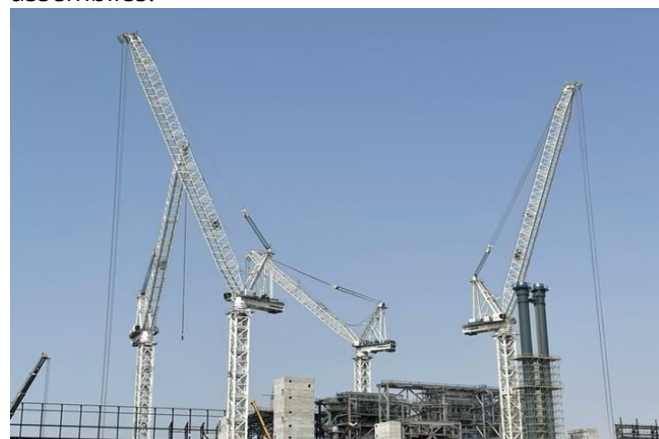
## Project progress

The process water tank is nearing completion with only the roof section to be added and parts of the water treatment plant systems have arrived at site during March. Welding works for the membranes enclosing boiler 1 combustion chamber are well under way, and internal scaffolding for boiler 2 is being erected. Specialist contractors from the turbine manufacturer are at site now overseeing the alignment of support structures, in preparation for the arrival of the turbine assemblies at site during April. The fitting of primary and secondary air ducting in block 1 is well advanced.

## Specialist contractors fitting external ducting



**Focus Spot 'Heavy Lifting'** The Warsan skyline is dominated by the four heavy lift cranes that are now stationed at the construction site. Each crane is over 100 metres in full height, and they have a combined lifting capacity of several hundred tons. Careful coordination between crane operators and lift supervisors is essential, as lifting operations are increasingly complex, with large and heavy objects needing to be lifted in position into congested process structures. These cranes can work independently, but they also operate in tandem, for some of the largest objects, such as the ram feeders, boiler steam tanks and waste hopper assemblies.



## E+S Focus-Solar Power in use for construction

Our EPC contractor has installed solar panels at site to help reduce the carbon footprint during construction works. The panels which have been laid out on the roof of the site offices and in a designated area at the front of the site are providing at least 20% of project power requirements. Our EPC contractor will be using the data gathered here to further expand the use of renewable energies for future projects in the GCC region.



**O+M team launch website** Our Operations and Maintenance contractor **Shoualah** have launched their website during March. You can find out details of staff vacancies and information about how they will operate the plant here [www.shoualah.ae](http://www.shoualah.ae). For information about the DWMC project, to request information or to raise a grievance please email us at [info@dwmc.ae](mailto:info@dwmc.ae).