

Message from Tim Clarke, CEO of DWMC

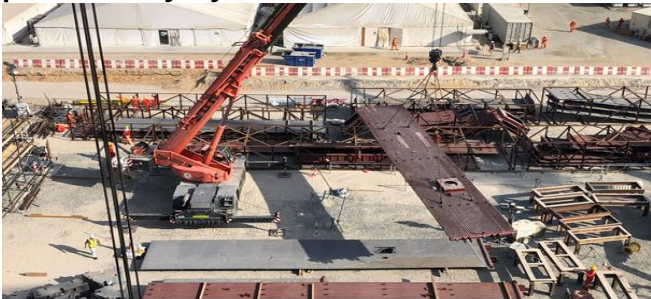
Welcome to the sixth DWMC newsletter. I'm delighted to report that the first shipment of boiler parts has arrived at site from the manufacturer in China. Our EPC contractor is carrying out as much welding and assembly of these parts as possible at ground level, before the units are lifted into their final position in the boiler hall.



Project progress

The feed hopper and feed hopper chute for line two have been installed and our EPC contractor can now begin to fit the boiler membranes and pressure pipework. Finishing works to the interconnecting gantries for lines one and two are well advanced in the boiler house, while works on waste hoppers three, four and five has intensified.

Sections of boiler membrane are lifted into the pre-assembly laydown area



Assembly of structural steels in the air-cooled condenser has begun and primary foundations for the accommodation building have been cast. Large volumes of spoil have been removed from the eastern aspect of site near to the main entrance and grading and compacting of roadway subsurface is well underway in this area.

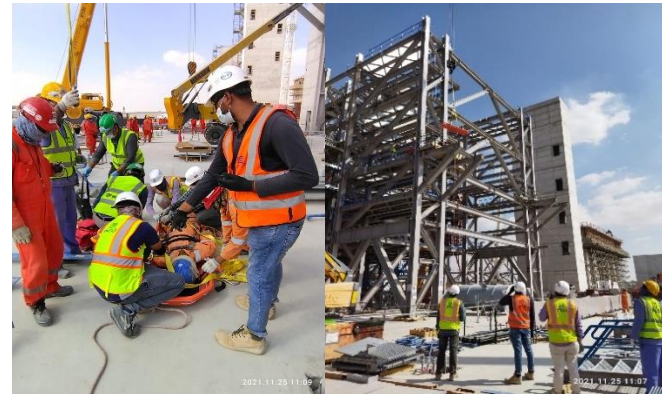
Monthly EPC Safety Award ceremony

Our EPC contractor has instigated a monthly HSE awards ceremony, where individuals who have demonstrated HSE excellence at site are presented with gifts and a certificate of recognition by senior project management staff. This initiative helps to develop HSE awareness at site and is inclusive of project workers at all levels within the organisation.



E+S Focus 'Rescue from height'. As many of the work areas are at high elevations, our emergency responders train for rescue of persons from height. Our teams are trained in first aid and in the event of an incident at height, the casualty will be assessed and stabilised before the decision to evacuate to ground level is taken. Specialist stretchers and lifting equipment are always available at site and if the casualty is immobile, our lifting supervisors coordinate rescue activities with tower crane operators. Only training dummies are used in rescue simulations

Rescue teams at work in a recent training exercise.



Focus Spot - Building foundations

Before building structures are erected, calculations are made to decide the type and thickness of foundations needed to support its weight. The loads to which it will be subjected in use are also calculated; this includes the weight of the equipment, fixtures, fittings, and people that will be in the building, plus the effects of wind. The ground is then excavated, compacted and levelled in preparation for the laying of the foundations. Foundations can be via vertical piles driven into the ground, or by a raft of re-enforced concrete onto which the main building structure is built.

Emirati team members

We are pleased to welcome Abdulla and Mazna to the DWMC team.

Abdulla is our Electrical, Instruments and Controls engineer and Mazna is our Administration Officer.



For more information about the DWMC project, to request information, or to raise a grievance please email us at info@dwmc.ae.