

Message from Tim Clarke, CEO of DWMC

Welcome to our second DWMC newsletter. The first batch of steels have now arrived at site and our EPC contractor has started erecting the main structural members. I am delighted to report that most of the steel we will use is manufactured right here in the UAE.



Heat Stress Campaign

During these hot summer months our EPC Contractor is running a heat stress awareness campaign, to ensure that all site workers keep safe from the extremes of heat. The site is closed between 12 and 4pm during the hottest times of the day.



Project progress

Foundation works for the generator assembly have now been completed. As the rotor, stator and turbine frame are some of the heaviest components in the plant, the foundations here are 2 metres deep, with extra thick reinforcing bars used to add strength.



The first major steel structures have been installed on the main bunker wall. These will support the crane assembly and boiler hall roof. Due to the size and weight of the steel a heavy lift crane was needed.



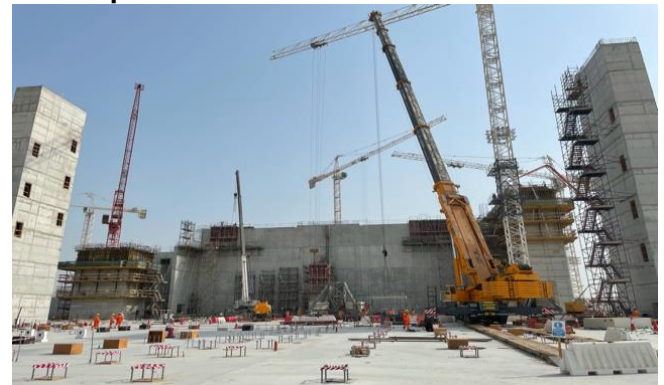
Environmental and Social

E+S Focus 'Dust Monitoring'. Managing airborne dust is a constant challenge, particularly in desert areas

where there are strong winds and sand is in the air anyway. The project perimeter is protected by fencing which helps prevent project dust from leaving the site boundary, and the EPC contractor regularly sprays the site roads with water to help suppress air borne dust. Monitoring is conducted around the site to ensure levels of dust are within the permitted levels. We will also be monitoring dust levels outside of the site area to ensure that sensitive receptors are not exposed to unacceptable levels of dust caused by project works.

Dubai Municipality continues to clear the DWMC site of pre-existing waste material, which will continue until late 2022.

Focus Spot - The Boiler House



The largest building at site will be the boiler house, located directly behind the waste bunker wall. Five boilers will be located here, producing the high-pressure steam needed to drive the turbine generator. In view is the location for boilers 1 and 2, which will be the first to be commissioned. The concrete shafts at each side of the picture are the 34-metre-high staircase structures. These will provide access to the intermediate process platforms and form the main anchor points for the boilers and their structural steel supports. When completed, the boiler house roof will surmount the structure at a total height of over 40 metres, making it the tallest building in Warsan! (This is still considerably smaller than the world's tallest building in Downtown Dubai-Burj Khalifa which stands at over 800 metres).

Recruitment

The Operations and Maintenance contractor who will be operating the facility on behalf of DWMC, will be providing information about recruitment opportunities when their own website is functioning. We will provide information and links to the site here when this comes online. If you would like any specific information about the project, if you wish to leave a comment or if you have a grievance you wish to share, then please use the links on our website.